

KEY FEATURES

- Standard models cover a range from 50.8 mm (2.0") to 914.4 mm (36") OD
- Pneumatic, hydraulic and electric drive options provide increased versatility
- Fully adjustable heavy duty bearing design provides greater serviceability
- Stepped and keyed gear clamps equipped with a through bolt provide a positive fit at each assembly joint
- Several different drive options are available to best position the motor for a specific machining application
- NB series clamshells accept a wide range of accessories to increase performance and expand capabilities
- Locator extensions are compatible with the MS series clamshells

DESCRIPTION

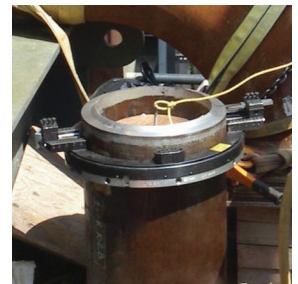
The NB or Narrow Body portable Clamshell series are ideal when space is at a premium. Each of the machines within the NB series have a height of 76.2 mm (3") and a width of 57.2 mm (2.25"). The resulting narrow body low profile design makes the NB series the perfect choice in tight spaces or if obstructions are present.

ITEMS INCLUDED WITH EACH MACHINE

- ✓ Clamshell body
- ✓ Locators & extensions covering the full range
- ✓ Slides
- ✓ Motor & Mounting
- ✓ Air Caddy
- ✓ Tool Kit
- ✓ Manual
- ✓ Shipping crate

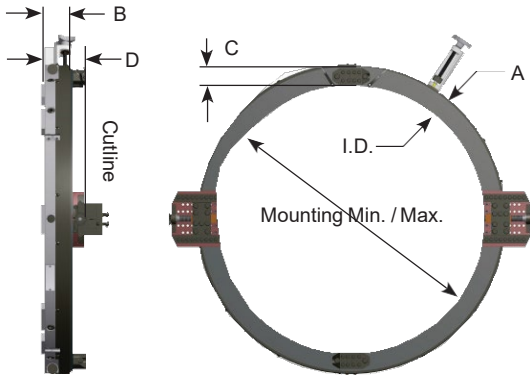


Full range of sizes



Ideal for confined spaces

SPECIFICATION



NB Clamshell Specs (all models):

B = 3" (76.2 mm)

C = 2.25" (57.2 mm)

D = 4.5" (114.3 mm)

* "D" dimension (or cutline) may change with different tooling. Contact consultant for specifics.

MODEL	UNIT OF MEASURE	MOUNTING MIN MAX	MACHINE ID	A	B	C	D*	MACHINE WEIGHT
DLR-NB4	Std. - in	2.0–4.5	4.75	9.25	3	2.25	4.5	25 lbs
	Metric - mm	50.8–114.0	120.7	235	76.2	57.2	114.3	11.35 kg
DLR-NB6	Std. - in	2.375–6.625	6.875	11.375	3	2.25	4.5	37 lbs
	Metric - mm	60.3–168.3	174.6	288.9	76.2	57.2	114.3	16.80 lbs
DLR-NB8	Std. - in	3.5–8.625	8.875	13.375	3	2.25	4.5	43 lbs
	Metric - mm	88.9–219.1	225.4	339.7	76.2	57.2	114.3	19.52 kg
DLR-NB10	Std. - in	4.5–10.75	11.25	15.75	3	2.25	4.5	50 lbs
	Metric - mm	114.3–273.1	285.8	400.1	76.2	57.2	114.3	22.7 kg
DLR-NB12	Std. - in	6.625–12.75	13.25	17.75	3	2.25	4.5	56 lbs
	Metric - mm	168.3–323.9	336.6	450.9	76.2	57.2	114.3	25.42 kg
DLR-NB14	Std. - in	8.625–14	14.5	19	3	2.25	4.5	63 lbs
	Metric - mm	219.1–355.6	368.3	482.6	76.2	57.2	114.3	28.6 kg
DLR-NB16	Std. - in	10.625–16	16.5	21	3	2.25	4.5	70 lbs
	Metric - mm	219.1–406.4	419.1	533.4	76.2	57.2	114.3	31.78 kg
DLR-NB18	Std. - in	12.75–18	18.5	23	3	2.25	4.5	75 lbs
	Metric - mm	323.9–457.2	469.9	584.2	76.2	57.2	114.3	34.05 kg
DLR-NB20	Std. - in	14–20	20.5	25	3	2.25	4.5	83 lbs
	Metric - mm	355.6–508.0	520.7	635	76.2	57.2	114.3	37.68 kg
DLR-NB24	Std. - in	18–24	24.5	29	3	2.25	4.5	98 lbs
	Metric - mm	457.2–609.6	622.3	736.6	76.2	57.2	114.3	44.49 kg
DLR-NB26	Std. - in	20–26	26.5	31	3	2.25	4.5	104 lbs
	Metric - mm	508.0–660.4	673.1	787.4	76.2	57.2	114.3	47.21 kg
DLR-NB28	Std. - in	22–28	28.5	33	3	2.25	4.5	112 lbs
	Metric - mm	558.8–711.2	723.9	838.2	76.2	57.2	114.3	50.84 kg
DLR-NB30	Std. - in	24–30	30.5	35	3	2.25	4.5	118 lbs
	Metric - mm	609.6–762.0	774.7	889	76.2	57.2	114.3	53.57 kg
DLR-NB32	Std. - in	26–32	32.5	37	3	2.25	4.5	124 lbs
	Metric - mm	660.4–812.8	825.5	939.8	76.2	57.2	114.3	56.29 kg
DLR-NB36	Std. - in	30–36	36.5	41	3	2.25	4.5	135 lbs
	Metric - mm	762.0–914.4	927.1	1041.4	76.2	57.2	114.3	61.29 kg