

▼ Shown: GT-Series Bolt Tensioners



## Accurate & Reliable Extreme Performance Bolt Tensioner



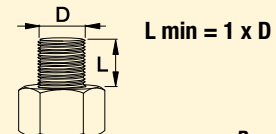
### Tensioning Pumps, Hoses and Couplers

High pressure pumps, hoses and fittings matched for use with the Enerpac GT-Series Bolt Tensioning system.

Page: 59



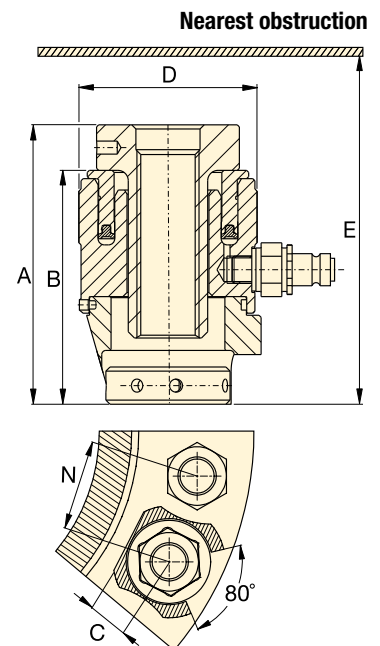
### Minimum Stud Protrusion



Page: 76


- Six load cells from M16 to M95 or from 5/8" to 3 3/4"
- Twin ports for quick connection of multiple tools
- Only one size of bridge per size of load cell
- Detachable and rotational bridge simplifies tool positioning
- Full bridge window
- Piston stroke indicator
- Black surface treatment protects against corrosion
- Anti-slip grip for more secure handling
- Universal and multi-use tool.

▼ GT-Series bolt tensioner used for tightening blade bolts of wind turbine.



| Bolt Range |               | Load Cell and Bridge Reference | Technical Data                             |                    |             | Dimensions (mm) |     |    |     | ⚖️ (kg) |
|------------|---------------|--------------------------------|--|--------------------|-------------|-----------------|-----|----|-----|---------|
| (mm)       | (inch)        |                                | Cylinder Effective Area (mm <sup>2</sup> ) | Load Capacity (kN) | Stroke (mm) | A               | B   | C  | D   |         |
| M16-M30    | 5/8"-1"       | <b>GT1-LCB</b>                 | 1495,4                                     | 224,3              | 10          | 135             | 113 | 27 | 86  | 3,0     |
| M30-M39    | 1 1/8"-1 1/2" | <b>GT2-LCB</b>                 | 2677,2                                     | 401,5              | 10          | 136             | 111 | 35 | 107 | 4,1     |
| M39-M52    | 1 1/2"-2"     | <b>GT3-LCB</b>                 | 5127,1                                     | 768,9              | 10          | 160             | 126 | 46 | 138 | 7,0     |
| M52-M68    | 2"-2 1/2"     | <b>GT4-LCB</b>                 | 9782,1                                     | 1466,9             | 10          | 180             | 141 | 62 | 174 | 12,2    |
| M68-M80    | 2 1/2"-3 1/4" | <b>GT5-LCB</b>                 | 15079,7                                    | 2261,4             | 10          | 202             | 157 | 78 | 210 | 18,7    |
| M80-M95    | 3 1/4"-3 3/4" | <b>GT6-LCB</b>                 | 18972,1                                    | 2845,1             | 10          | 219             | 173 | 82 | 240 | 27,8    |

# Hydraulic Bolt Tensioners

| Load Cell and Bridge Reference | Thread Size     | Adaptor Kit Model Number | Pitch Between Bolts N (mm) | Minimum Height E (mm) |  (kg) |
|--------------------------------|-----------------|--------------------------|----------------------------|-----------------------|--|
| GT1-LCB<br>(224 kN)            | M16 x 2         | GT1PM-NRS01620           | 55                         | 169                   | 1,6  |
|                                | M18 x 2,5       | GT1PM-NRS01825           | 56                         | 165                   | 1,5  |
|                                | M20 x 2,5       | GT1PM-NRS02025           | 57                         | 165                   | 1,4  |
|                                | M24 x 3         | GT1PM-NRS02430           | 59                         | 164                   | 1,3  |
|                                | M27 x 3         | GT1PM-NRS02730           | 62                         | 167                   | 1,2  |
|                                | M30 x 3,5       | GT1PM-NRS03035           | 65                         | 170                   | 1,0  |
|                                | 5/8"-11UN       | GT1P-NRS0625U11          | 55                         | 169                   | 1,6  |
|                                | 3/4"-10UN       | GT1P-NRS0750U10          | 56                         | 165                   | 1,4  |
|                                | 7/8"-9UN        | GT1P-NRS0875U09          | 59                         | 164                   | 1,3  |
|                                | 1"-8UN          | GT1P-NRS1000U08          | 62                         | 167                   | 1,2  |
| 1 1/8"-8UN                     | GT1P-NRS1125U08 | 65                       | 170                        | 1,0                   |  |
| GT2-LCB<br>(401 kN)            | M30 x 3,5       | GT2PM-NRS03035           | 71                         | 173                   | 2,6  |
|                                | M33 x 3,5       | GT2PM-NRS03335           | 74                         | 174                   | 2,4  |
|                                | M36 x 4         | GT2PM-NRS03640           | 77                         | 177                   | 2,2  |
|                                | M39 x 4         | GT2PM-NRS03940           | 80                         | 180                   | 1,9  |
|                                | 1 1/8"-8UN      | GT2P-NRS1125U08          | 71                         | 173                   | 2,6  |
|                                | 1 1/4"-8UN      | GT2P-NRS1250U08          | 74                         | 174                   | 2,4  |
|                                | 1 3/8"-8UN      | GT2P-NRS1375U08          | 77                         | 177                   | 2,2  |
| 1 1/2"-8UN                     | GT2P-NRS1500U08 | 80                       | 180                        | 2,0                   |  |
| GT3-LCB<br>(769 kN)            | M39 x 4         | GT3PM-NRS03940           | 92                         | 212                   | 5,7  |
|                                | M42 x 4,5       | GT3PM-NRS04245           | 96                         | 215                   | 5,4  |
|                                | M45 x 4,5       | GT3PM-NRS04545           | 99                         | 218                   | 5,0  |
|                                | M48 x 5         | GT3PM-NRS04850           | 105                        | 216                   | 4,7  |
|                                | M52 x 5         | GT3PM-NRS05250           | 108                        | 220                   | 4,2  |
|                                | 1 1/2"-8UN      | GT3P-NRS1500U08          | 92                         | 212                   | 5,7  |
|                                | 1 5/8"-8UN      | GT3P-NRS1625U08          | 96                         | 215                   | 5,3  |
|                                | 1 3/4"-8UN      | GT3P-NRS1750U08          | 99                         | 218                   | 5,0  |
|                                | 1 7/8"-8UN      | GT3P-NRS1875U08          | 105                        | 216                   | 4,6  |
| 2"-8UN                         | GT3P-NRS2000U08 | 108                      | 220                        | 4,2                   |  |
| GT4-LCB<br>(1467 kN)           | M52 x 5         | GT4PM-NRS05250           | 118                        | 240                   | 10,7   |
|                                | M56 x 5,5       | GT4PM-NRS05655           | 121                        | 244                   | 10,1   |
|                                | M60 x 5,5       | GT4PM-NRS06055           | 124                        | 248                   | 9,4  |
|                                | M64 x 6         | GT4PM-NRS06460           | 127                        | 252                   | 8,8  |
|                                | M68 x 6         | GT4PM-NRS06860           | 130                        | 256                   | 8,1  |
|                                | 2"-8UN          | GT4P-NRS2000U08          | 118                        | 240                   | 10,7   |
|                                | 2 1/4"-8UN      | GT4P-NRS2250U08          | 121                        | 244                   | 9,7  |
| 2 1/2"-8UN                     | GT4P-NRS2500U08 | 127                      | 252                        | 8,5                   |  |
| GT5-LCB<br>(2261 kN)           | M68 x 6         | GT5PM-NRS06860           | 145                        | 278                   | 17,3   |
|                                | M72 x 6         | GT5PM-NRS07260           | 149                        | 282                   | 16,4   |
|                                | M76 x 6         | GT5PM-NRS07660           | 152                        | 286                   | 15,5   |
|                                | M80 x 6         | GT5PM-NRS08060           | 162                        | 293                   | 14,6   |
|                                | 2 1/2"-8UN      | GT5P-NRS2500U08          | 144                        | 274                   | 17,8   |
|                                | 2 3/4"-8UN      | GT5P-NRS2750U08          | 149                        | 282                   | 16,3   |
|                                | 3"-8UN          | GT5P-NRS3000U08          | 152                        | 286                   | 14,8   |
| 3 1/4"-8UN                     | GT5P-NRS3250U08 | 162                      | 293                        | 13,1                  |  |
| GT6-LCB<br>(2845 kN)           | M80 x 6         | GT6PM-NRS08060           | 169                        | 312                   | 22,3   |
|                                | M85 x 6         | GT6PM-NRS08560           | 169                        | 312                   | 21,0   |
|                                | M90 x 6         | GT6PM-NRS09060           | 178                        | 317                   | 19,4   |
|                                | M95 x 6         | GT6PM-NRS09560           | 181                        | 322                   | 18,0   |
|                                | 3 1/4"-8UN      | GT6P-NRS3250U08          | 169                        | 312                   | 20,7   |
|                                | 3 1/2"-8UN      | GT6P-NRS3500U08          | 178                        | 317                   | 18,8   |
| 3 3/4"-8UN                     | GT6P-NRS3750U08 | 181                      | 322                        | 16,8                  |  |

## GT Series



Bolt Range:

**M16 - M95, 5/8" - 3 3/4"**

Maximum Load:

**2845 kN**

Maximum Operating Pressure:

**1500 bar**



### How to Order

To provide maximum flexibility Load Cell and Bridges are ordered separately from Adaptor Kits.

Example, to order a complete tensioner for a M36 x 4 threaded bolt order:

1 x Load Cell and Bridge: **GT2-LCB**

1 x Adaptor Kit: **GT2PM-NRS03640**



### Bolting Integrity Software

A comprehensive on-line software solution for Bolted Joint integrity at [www.enerpac.com](http://www.enerpac.com)

Integral databases hold data for:

- BS1560, MSS SP44, API 6A and 17D flanged joints
- Common gasket materials and configurations
- Comprehensive range of bolt materials
- Comprehensive range of lubricants
- Enerpac's Controlled Bolting Equipment including: Torque Multipliers, Hydraulic Wrenches and Bolt Tensioning tools.

Custom Joint information can also be entered.

The software offers Tool selection, Bolt Load calculations and Tool pressure settings, as well as, a combined Application data sheet and Joint completion report.