

Manifolds, hoses, couplers, tubing

Shown: Hoses, Couplers, Manifolds



Use genuine Enerpac manifolds, couplers, hoses and tubings to connect your workholding cylinders or fixtures to the hydraulic power source.

A-series, Manifolds

For multiple hydraulic line connections at one central location directing oil to or from a pressure source.

H700-series, Hoses

High pressure hydraulic hoses, for demanding applications. Thermo-plastic safety hoses for use on all Enerpac pumps and cylinders.

C-series, High Flow Couplers

High pressure couplers recommended for use with all Enerpac pumps and cylinders.

AH, AR-series, Couplers

Spee-D® quick disconnect low leakage couplers for easy connection of hydraulic circuits.

T-series, Tubing

High pressure steel tubing, available in 1,5 m lengths.

Manifolds

- Easy to connect
- Mounting holes on all models

Couplers

- For more safety: couplers cannot be connected or disconnected while under hydraulic pressure

Hydraulic hoses and tubings

- Thermo-plastic safety hoses (max. 700 bar)
- Four layer design, including two high strength wire braids
- High pressure steel tubing for permanent installations.

Important

Do not exceed the maximum pressure.

Inspect hoses and tubing frequently and replace as required.

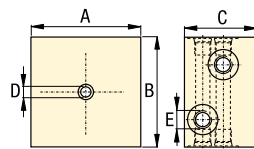
Options

Fittings

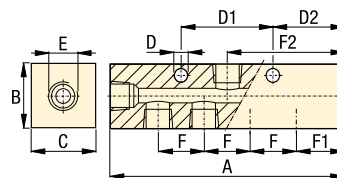
194 ▶



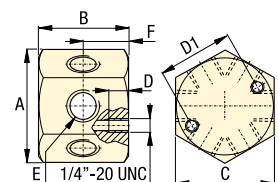
A-63



A-60, -61, -64, -65



A-66



Manifolds dimensions in mm [± 0.1]

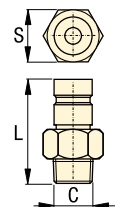
Number of ports	Model number	A	B	C	D	D1	D2	E	F	F1	F2	kg
2 x 4	A-63	76	76	51	6,3	-	-	SAE #4	-	-	-	0,9
5	A-60	89	32	32	7,1	38	25	SAE #4	38	25	44	0,5
7	A-61	165	32	32	7,1	38	32	SAE #4	25	32	83	0,6
7	A-64	178	32	32	6,3	76	32	3/8"-18 NPTF	38	32	89	1,5
7	A-65	368	32	32	6,3	203	32	3/8"-18 NPTF	102	32	184	2,7
6	A-66	58	42	51	13,2	38	-	3/8"-18 NPTF	-	-	-	0,9

Thermoplastic Safety Hoses

Hose length m	Hose End one NPTF	Hose End two NPTF	Internal diameter mm	Model Number	Maximum Pressure bar	kg
0,6	3/8"	3/8"	6,4	H-7202	700	0,5
0,9	3/8"	3/8"	6,4	H-7203	700	0,7
1,8	3/8"	3/8"	6,4	H-7206	700	0,9
3,0	3/8"	3/8"	6,4	H-7210	700	1,4

Couplers

Max. pressure bar	Max. oil flow l/min	Model Nr. coupler complete	Model Nr. female half	Model Nr. male half	Thread size C	L mm	S mm
700	40	C-604	CR-400	CH-604	3/8" NPTF	64	22
700	40	A-604	AR-400	AH-604	3/8" NPTF	42	19
350	17	-	AR-650 *	AH-650	1/4" NPTF	38	17,5
350	17	-	AR-650 *	AH-652	G 1/4"	34	17,5
350	17	-	AR-650 *	AH-654	SAE #4	41	17,5



* Note: Thread size **AR-650** is 1/4" NPTF, dimension S is 20,6 mm. Use **FZ-1055** fitting to connect to 3/8" hose ends.

Tubing

Maximum Pressure bar	Length m	Model number	Internal diameter mm	External diameter inch
350	1,5	T-2560	ø 3,8	ø 1/4"