

# Manual Couplers *Application & selection*

Shown: MCH-31, MCRA-11, MCRC-21, MCH-21, MCR-21

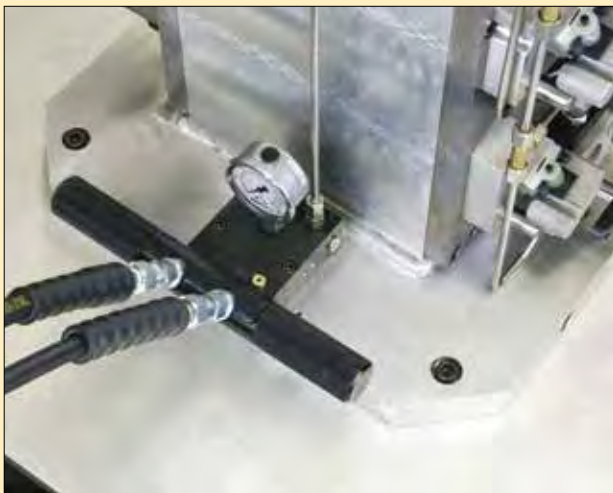


**The Enerpac manual coupler is available as a dual connection model or dual connection with optional air circuit for part present sensing. The fixture side receiver is available with or without an internal pilot operated check valve. Filtration provides protection from contamination.**

### Manual coupler applications:

- **With P.O. check**
  - Use MCRC-21 for a complete, unitized coupler receiver solution.
- **Without P.O. check:**
  - Use MCR-21 when using a remote mounted Pilot Operated Check Valve.

■ *Enerpac manual couplers simplify the process of connecting and disconnecting to a palletized fixture.*

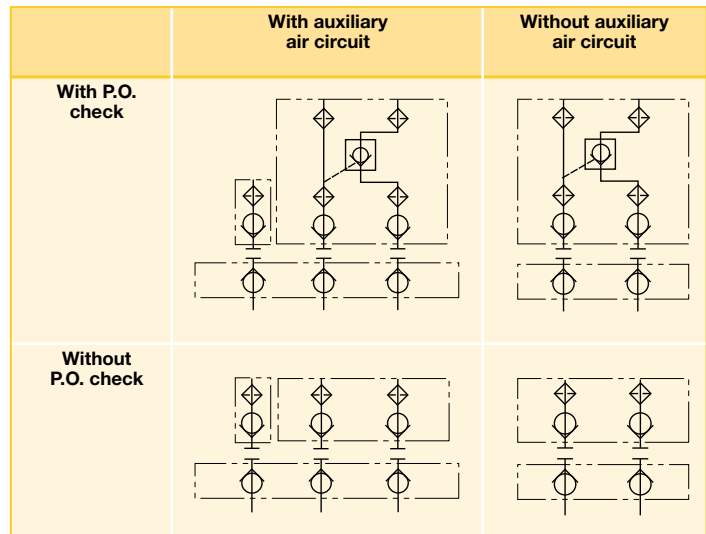


## Manual Couplers

...convenient connection

- Use on palletized fixtures
- Available with or without an internal pilot operated (P.O.) check valve
- Optional coupler block available to add circuit for air part present sensing
- Manifold porting
- Porting for tubing connections
- Filtration to prevent contamination
- Removable front plate provides access to the front filters and check cartridge
- Top port accommodates an accumulator or gauge.

## Manual Coupler Circuits



## Product selection

Model number	Basic configurations	Circuits
<b>MCRC-21</b>	Pallet receiver with P.O. check	Two Hydraulic
<b>MCR-21</b>	Pallet receiver without P.O. check	Two Hydraulic
<b>MCRA-11</b>	Auxiliary air circuit receiver block	One Air
<b>MCH-21</b>	Operator handle	Two Hydraulic
<b>MCH-31</b>	Operator handle	Two Hydraulic, One Air
<b>MCSB-21</b>	Storage block	-
<b>MCPS-21</b>	Proximity switch kit	-

## Select your components

### MCRC-21 Pallet Receiver with P.O. Check

An internal pilot operated check valve and multiple ports to accommodate a gauge or accumulator make the MCRC-21 a great choice of coupler receiver for use in a palletized fixture. Internal filtration protects the check from contamination. Use with the MCH-21 operator handle.



### MCR-21 Pallet Receiver

For applications where the pilot operated check valve is remote mounted in the fixture circuit, use the MCR-1. Internal filtration protects the circuit from outside contamination.



### MCRA-11 Auxiliary air circuit receiver

The MCRA-11 is used to provide an additional connection for use with air part sensing circuits. Use with either the MCRC-21 or the MCR-21. Use with the MCH-31 operator handle.



### MCSB-21 Operator Handle Storage Block

Proper storage of the MCH-21 or MCH-31 handle prevents contamination of the couplers, and makes sure that the handle is disconnected from the fixture. Use the MCPS-21 proximity switch to confirm proper storage as an input to the machine control.



### MCH-21 Two Coupler Operator Handle

Use the MCH-21 with either the MCRC-21 or the MCR-21 pallet receiver.



### MCH-31 Operator Handle

Use the MCH-31 when using the MCRA-11 with either the MCRC-21 or MCR-21 receivers.



Max. Flow: 15 l/min

Pressure: 0 - 350 bar

- E** Acopladores manuales
- F** Manuel coupleur
- D** Manuelle kupplung

## Options

### FZ Series fittings

 194 ▶



### Hoses

 192 ▶



### Pilot operated check valves

 153 ▶



### Accumulators

 162 ▶



## Important

**Do not couple or uncouple with the hydraulic nozzles under pressure. This can damage the couplers.**

**Do not exceed maximum flow and pressure.**

Operating pressure bar	Replacement hydraulic nozzle	Replacement filter kit	Voltage VDC	Model number
7 - 350	<b>AH-654</b>	<b>FL-2201K</b>	-	<b>MCRC-21</b>
7 - 350	<b>AH-654</b>	<b>FL-2201K</b>	-	<b>MCR-21</b>
1 - 7 *	<b>AH-654</b>	<b>FL-2201K</b>	-	<b>MCRA-11</b>
7 - 350	<b>AR-650</b>	-	-	<b>MCH-21</b>
7 - 350	<b>AR-650</b>	-	-	<b>MCH-31</b>
-	<b>AH-654</b>	-	-	<b>MCSB-21</b>
-	-	-	24	<b>MCPS-21</b>

\* Air pressure

[www.enerpacwh.com](http://www.enerpacwh.com)

**ENERPAC** 

167