

# Swing clamps - Cartridge models

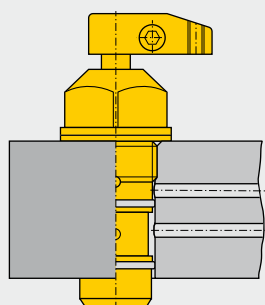
Shown: SCRD-122, SCRD-52



## SC series

Enerpac cartridge swing clamps are designed for integrated manifold mounting. This eliminates the need for fittings and tubing on the fixture.

Cartridge swing clamps simplify mounting and optimize clamping effectiveness.



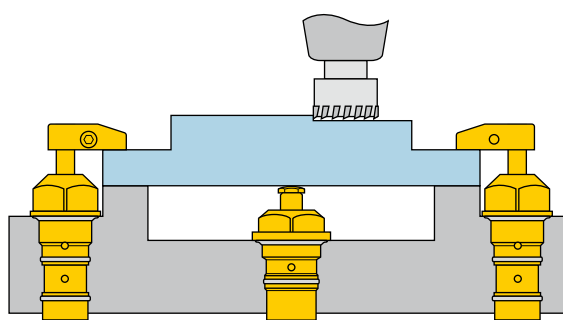
Hydraulic fixture with components on two faces for more efficient production.



## Eliminates the need for tubing and fittings

- Minimal space required on fixture
- Can be completely recessed in fixture
- External plumbing not required
- Allows close positioning of adjoining units
- 30, 45 and 60 degree swing angles available on request

Enerpac compact design cartridge model swing clamps used in conjunction with a cartridge model work support in a typical clamping application.



## Product selection

Clamping force <sup>1)</sup>	Stroke		Left turning	Right turning	Cylinder effective area	Oil capacity		Max. oil flow <sup>1)</sup>	Standard clamp arm	
	kN	mm				cm <sup>2</sup>	cm <sup>3</sup>			
	Clamp	Total		90°	Clamp	Un-clamp	Clamp	Un-clamp	Sold separately	
▼ Single acting										
Model number <sup>2)</sup>										
2,1	8,1	16,8	<b>SCLS-22</b>	<b>SCRS-22</b>	0,77	-	1,31	-	0,2	<b>CAS-22</b>
4,9	9,9	22,6	<b>SCLS-52</b>	<b>SCRS-52</b>	1,81	-	4,09	-	0,4	<b>CAS-52</b>
10,7	12,7	27,7	<b>SCLS-122</b>	<b>SCRS-122</b>	4,06	-	11,47	-	1,6	<b>CAS-121</b>
▼ Double acting										
Model number <sup>2)</sup>										
2,2	8,1	16,8	<b>SCLD-22</b>	<b>SCRD-22</b>	0,77	1,55	1,31	2,49	0,2	<b>CAS-22</b>
5,6	9,9	22,6	<b>SCLD-52</b>	<b>SCRD-52</b>	1,81	3,81	4,09	8,52	0,4	<b>CAS-52</b>
11,6	12,7	27,7	<b>SCLD-122</b>	<b>SCRD-122</b>	4,06	7,94	11,47	22,94	1,6	<b>CAS-121</b>

<sup>1)</sup> With standard clamp arm. Clamp arms are sold separately (□32). Clamping forces for single-acting models are reduced in order to overcome return spring force.

<sup>2)</sup> For models with straight plunger movement, replace L or R with S.

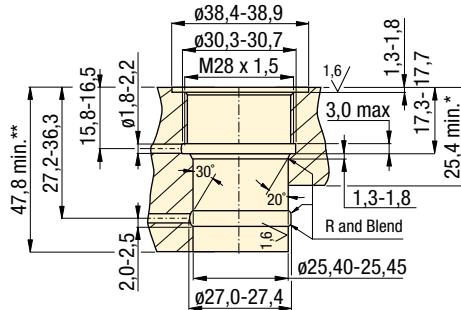
## Dimensions in mm [ ]

Left turning models	A	B	C	C1	C2	D1	D2	E	F
						∅	∅	hexagon	
▼ Single acting									
<b>SCLS-22</b>	112,0	57,4	24,9	41,4	23,9	38,4	25,4	34,8	9,9
<b>SCLS-52</b>	135,4	79,8	37,8	60,7	35,3	56,6	34,8	50,5	16,0
<b>SCLS-122</b>	171,5	96,5	38,6	66,3	36,3	75,9	57,2	69,6	22,1
▼ Double acting									
<b>SCLD-22</b>	112,0	57,4	24,9	41,4	23,9	38,4	25,4	34,8	9,9
<b>SCLD-52</b>	135,4	79,8	37,8	60,7	35,3	56,6	34,8	50,5	16,0
<b>SCLD-122</b>	171,5	96,5	38,6	66,3	36,3	75,9	57,2	69,6	22,1

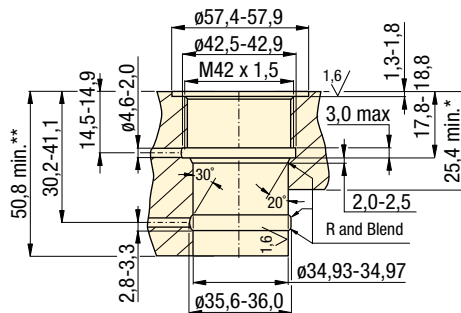
NOTE: dimensions shown with standard clamp arm.

## Installation dimensions in mm

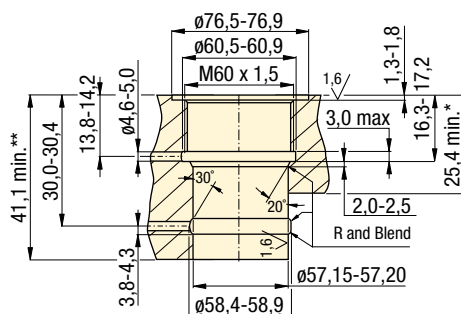
### -22 models



### -52 models



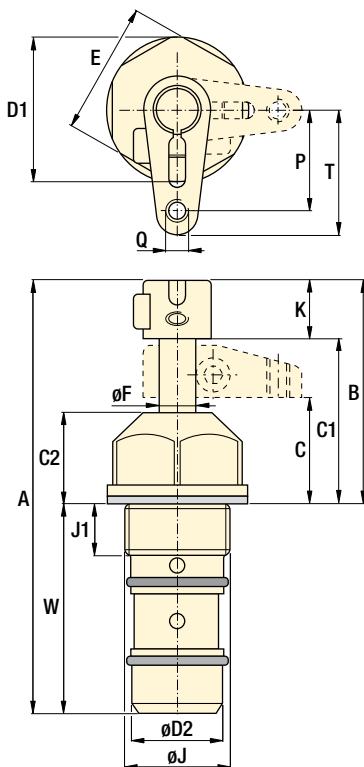
### -122 models



\* Minimum plate height for single-acting models.

\*\* Minimum plate height for double-acting models.

### -22, 52, 122 models

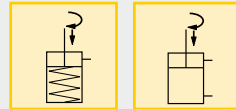


Force: 2,1 - 11,6 kN

Stroke: 16,8 - 27,7 mm

Pressure: 35 - 350 bar

- E** Cilindros giratorios
- F** Vérins de bridage pivotants
- D** Schwenkspannzylinder



## Options

**Clamp arms**

☐ 32 ▶

**Work supports**

☐ 43 ▶

**Collet-Lok® swing cylinders**

☐ 12 ▶

**Accessories**

☐ 86 ▼

**Sequence valves**

☐ 152 ▶

## ⚠ Important

30, 45, and 60 degree rotations are available upon request. Add -30, -45 or -60 to end of standard model number to order directly from Enerpac. To order rotation limiter separately, see page 32.

Custom cylinders including longer stroke lengths are available on request.

In case there is a risk of machining coolants and debris being inhaled via the breather vent, it is recommended to pipe this port to an area outside the fixture that is protected from machining coolants and debris.

Do not exceed maximum flow rates.

	J	J1	K	P	Q	T	W		Right turning models
	Ø							kg	
	M28 x 1,5	12,7	16,0	24,6	M6 x 1	31,0	54,6	0,5	<b>SCRS-22</b>
	M42 x 1,5	13,7	19,3	40,1	M8 x 1,25	48,0	55,6	0,9	<b>SCRS-52</b>
	M60 x 1,5	13,2	30,5	51,6	.375-16 UNC	62,0	74,9	2,5	<b>SCRS-122</b>
	M28 x 1,5	12,7	16,0	24,6	M6 x 1	31,0	54,6	0,5	<b>SCRD-22</b>
	M42 x 1,5	13,7	19,3	40,1	M8 x 1,25	48,0	55,6	0,9	<b>SCRD-52</b>
	M60 x 1,5	13,2	30,5	51,6	.375-16 UNC	62,0	74,9	2,5	<b>SCRD-122</b>