

Shown: VP-12



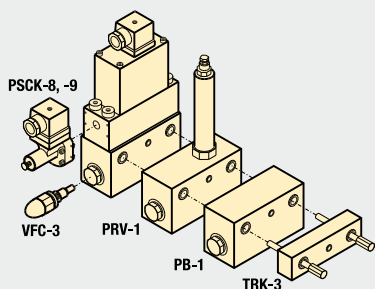
VP-series

Solenoid directional valves control the direction of the oil flow to each cylinder port.

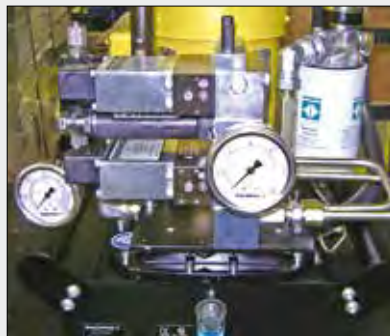
Application

VP-series valves in combination with all its options in the illustration and photo below. With the use of a code 12 manifold (see page 117, 121) these valves allow quick and easy assembly on your Enerpac ZW-series pump. For remote mounting of these valves use a WM-10 manifold.

VP-series



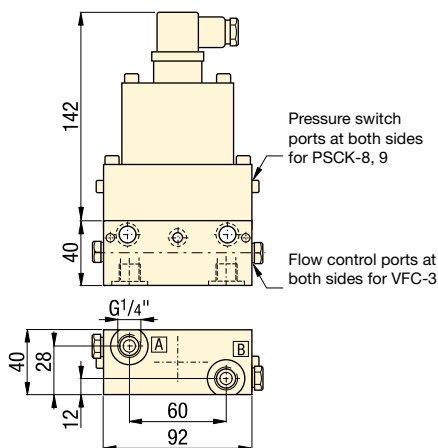
■ Enerpac VP-series valves mounted on -12 manifold, mounted on a ZW-series workholding pump.



Solenoid directional valves

- Dual poppet valve design for zero internal leakage
- Inlet check-valve standard
- High cycle switching
- Stackable to 8 valve stations high
- 17-350 bar operational pressure
- Oil flow capacity 7 l/min @ 350 bar
- Oil flow capacity 15 l/min @ 0 bar
- G1/4" oil connections and integrated filtration
- 24 VDC and 110 VAC available.

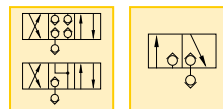
VP series



Pressure: 350 bar

Max. Flow: 15 l/min

- Ⓔ Válvulas de control
- Ⓕ Electro distributeurs
- Ⓓ Wegesitzventile



Options

WM-10 remote manifold

□ 139 ▶

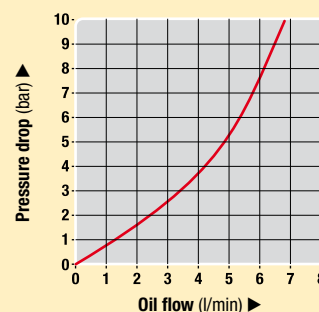


TRK-series Tie rod kits

□ 139 ▶



Oil flow vs pressure drop



Product selection

Voltage @ current at 50/60 Hz	Model number	Flow path	Used with cylinder(s)
▼ 4/3 Closed center	24 VDC @ 1,13 A		1x Double-acting
	110 VAC @ 500 mA		1x Double-acting
▼ 4/3 Float center	24 VDC @ 1,13 A		1x Double-acting
	110 VAC @ 500 mA		1x Double-acting
▼ 3/2 Normally closed	24 VDC @ 1,13 A		1x 1x Dbl-act. / 2x Sgl-act.
	110 VAC @ 500 mA		1x Dbl-act. / 2x Sgl-act.
▼ 3/2 Normally open	24 VDC @ 1,13 A		1x Dbl-act. / 2x Sgl-act.
	110 VAC @ 500 mA		1x Dbl-act. / 2x Sgl-act.
▼ 3/2 1 port normally closed, 1 port normally open	24 VDC @ 1,13 A		1x Dbl-act. / 2x Sgl-act.
	110 VAC @ 500 mA		1x Dbl-act. / 2x Sgl-act.

Note: DIN 43650 electrical connector included. Valve weight 3,0 kg.